

car
ing
shar
ing
prepar
ing



Paraparaumu Beach School

Newsletter 2018/09

27 March 2018

Upcoming Events

TERM 1

WEEK 9

Tues, 27 March

- School closes at 12.30pm today for Teachers' Union Meeting

- Snr Trip #3 to Kapiti Island

Wed, 28 March

- Snr Trip #4 to Kapiti Island

- Rms 4 & 29 Te Moana trip to Pukerua Bay

Thurs, 29 March

- Rms 3 & 28 Te Moana trip to Pukerua Bay

Fri, 30 March

- Easter Good Friday — SCHOOL CLOSED

WEEK 10

Mon, 2 April

- Easter Monday — SCHOOL CLOSED

Tues, 3 April

- Easter Tuesday — SCHOOL CLOSED

Fri, 6 April

- Tu Meke time at 11.15am
- Whanau Fun from 1.30pm

WEEK 11

Tues, 10 April

- BoT Meeting—7pm

Fri, 13 April

- Last day of Term 1

**TERM 2 STARTS
MONDAY, 30 APRIL**

PRINCIPAL'S MESSAGE

Tena Koutou,

Recently we've purchased some more scooter racks, as so many PBS kids love using scooters to travel to and from school. Many kids also enjoy riding their scooters and skateboards at morning tea and lunch time, which is a great way to stay active. **Whilst it is not a legal requirement to wear a helmet when riding a scooter or skateboard, it is something the school strongly recommends.** Fortunately, accidents on our scooter court have been relatively minor over the years, however one bump to the head is sometimes all it takes to sustain a serious head injury. There have been a number of stories in the news lately of helmets saving lives, so I think now is a timely reminder to keep our kids safe! Thanks everyone.



Over the last couple of years, we have introduced Mandarin teaching at PBS (selected classes in Yrs 5-8). A number of other schools on the Kapiti Coast (and country wide) are teaching basic Mandarin to students too; this has been made possible through Ministry of Education and Confucius Institute funding. This new initiative is a reflection of New Zealand's growing trade and tourism partnerships with China, as well as the rapidly rising Asian population across the country.

In the last week of this term, two teachers and I will be travelling to China to visit schools. This year the teachers involved in teaching Mandarin were given the opportunity to visit China and begin a relationship with a sister school. Alice Graham and Rebekah Winter (who also taught Mandarin at Raumati South School) put their names forward and were accepted for the two week visit. This trip is one third funded by the Confucius Institute, one third funded by the school and one third funded by the individual teacher.

My trip to China is part of a North Island Principal's delegation, which eight Principals were selected for. This opportunity, offered by Victoria University and the Confucius Institute, is for Principals of primary schools currently offering Chinese Mandarin. Although my trip is at the same time, the schools and places I am visiting are different. There is no cost to PBS for this delegation. The purpose of both trips is to provide first-hand experience of Chinese culture, schools and contemporary Chinese society.

http://asia-knowledge.tki.org.nz/chinese_language_in_nz_schools/Why-learn-Chinese

Kind regards

Jess Ward - Principal/Tumuaki

STUDENT ATTENDANCE

Last year and this year I have noticed an increase in the number of students being taken out of school, during the school day, to attend extra-curricular activities *e.g. dancing, swimming, horse riding etc.* **I urge parents to make time for such pursuits outside of school hours.** Regular absence from class, as well as poor punctuality, can cause gaps in learning, disruption to programmes and a disconnect in social interactions.

School attendance, during a school's opening hours, is a legal requirement. Every time a student is away from school, we must record the reason for their absence in line with Ministry protocols. Some absences will be recorded as justified *e.g. a child is attending a specialist learning programme at another facility or attending occupational therapy.* However, students being removed from school for tap dance lessons, or similar, would be recorded as an unjustified absence. If parents do not supply any reason for a student's absence from school, then the absence is recorded as truant.

**EVERY
SCHOOL DAY
COUNTS**

The Ministry of Education states “*Student attendance, along with effective teaching, has the greatest influence on student engagement and achievement. All students must be present at school so they can participate and engage in learning. Parents and boards of trustees are legally responsible to ensure students' regular attendance at school.*”

If you have any queries in this regard then please do not hesitate to make contact with me at jward@pbs.school.nz

PLAYGROUND

On Easter Tuesday “Playground People Ltd” will be fencing off the large adventure playground in preparation for dismantling half the old equipment and installing the new playground. The kids are so excited about this much anticipated new play area. Watch this space!



KIDS QUOTE



According to one of our 5 years olds my job description has changed. She was quick to tell me...

“Principals keep cats away from cars”

No more information was given after this!
Jess Ward

JUICEES & COOKIES

Juicees and Cookies will be for sale on Wednesday lunchtime this week instead of Friday (due to Easter).



**Embrace our Education
Enhance our Future**

STUDENT WORK



Recently Jasper from Rm 11 created this wonderful clock, which he was excited to share with me. He had thought long and hard about all the elements a clock needed. Great work Jasper!

Today Georgia from Rm 3 presented me with a beautiful handmade tea towel for the staffroom. Georgia's design, using native birds, is beautiful. Thank you for this gift of kindness Georgia – I'm just worried that it's too gorgeous to use!



BUILDING PROGRESS ON ROOMS 5-8

The aluminium frames have arrived and are nearly all in. No glass has arrived yet as apparently there's a glass shortage in NZ! This photo shows windows frames going into the old dental clinic, which is going to be a flexible space for teachers to hold meetings and work with groups of students etc. This room also has a disabled bathroom and shower room attached.



SICKNESS AT SCHOOL—A NOTE FROM REGIONAL PUBLIC HEALTH

*Please remember that sick children need to stay away for **at least 48 hours** after the last symptoms of diarrhoea and/or vomiting. This is a minimum time period. If the 48 hour exclusion period has past, but a child is observably still not well (ie has fever, lethargic and unable to participate), they should not be at school. A child who is sick at school should be collected by their parents and taken home as soon as possible.*

RECENT STUDENT ACHIEVEMENTS

Triathlon: Congratulations to the following students who gained the 3 top spots in the 5-7yrs Waikanae Triathlon Race on Sunday: 1st Phoebe Corin, 2nd Mia Thomson and 3rd Holly McGregor.

PBS SCHOOL GALA—3 NOVEMBER 2018

The PTA are looking for volunteers to help with this year's gala. The gala is our school's major fundraiser which is held every two years and historically we raise around \$20,000. We cannot raise this sort of money for our school without help. The PTA are organising a separate committee just for the Gala and our children NEED YOU! We would love to have you join the Gala Committee. The next meeting is on 2 May at 7.30pm in the staffroom.

If you have any questions or bright ideas, please see either Sandy Saunders in Rm 22 or Sheryl McKnight in Rm 18.

Remember, without enough volunteers, this major fundraising event will not be able to go ahead, so every little bit of help is needed! Even one hour's support will help lighten the load for everyone and make this event a success.

Remember to start keeping your jars for the mystery jar stall and saving goods for the white elephant stall.

If you would like to donate something for the major raffle or quick fire raffle, please contact Samara on gavinandsamara@gmail.com

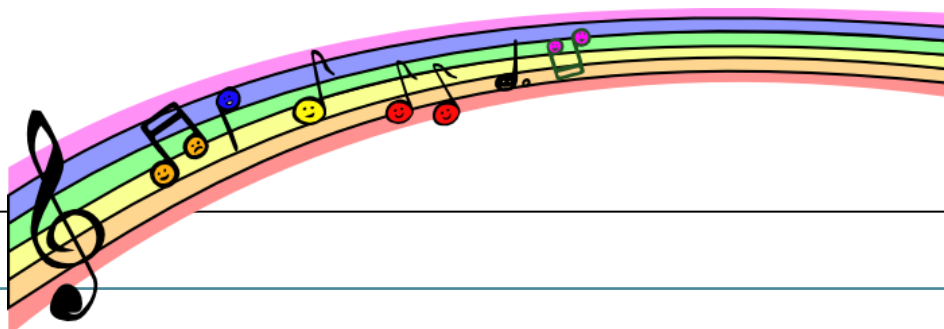
Sandy Saunders



WHANAU FUN NEWSLETTER

It's Emma-Jane and Maddie here from the 2018 Student Council. We are all organised for Whanau Fun for term one and are very excited with all the activities. This term we have themed Whanau Fun on music. Whanau fun will be held on Friday the 6th of April from 1.30pm so make sure to lay your outfit out the night before. It doesn't have to be anything too crazy, but just come in your colour if you can. We can't wait to see you all in your Whanau colours.

Parents are welcome to join us.





U12
Team



U10
Team

TOUCH RUGBY SCHOOLVSCHOOL

Congratulations to all of our teams which participated in the school v school competition last Sunday. We hear you all played your hearts out with some teams only just missing out on a placing. A special mention to the U12 touch team who won the competition! They won their final against Kapanui School 11-1. Well done team for all your efforts and sportsmanship on the day. A huge thank you to Pembroke Chambers and Toby Stevenson for coaching this team.

Also congratulations to the U10 team for coming first in their game.

Thank you to all parents who supported on the day. Can all gear bags please be returned to Alice Graham in Rm 13 asap?

NETBALL

Please can you help us? We are short one coach for a Yr 5 team. If you are considering coaching, but feel you do not have the skills, there is a coaching workshop for this age group provided by Coastlands Kapiti Netball. It is a pre-requisite and you are given a coaching handbook.

If you are willing to coach or know someone who is interested, please contact vwilson@pbs.school.nz.

Thank you.

NETBALL DATES

April 7	Grading Day for Yr 7 & 8 teams
May 2	Netball starts for Yr 3s
May 6	Netball starts for Yrs 4-6



FOOTBALL

'KCU Football Club is looking for girls aged 10 and 12 years to join a girl's only football team playing on Sundays. Please contact Clare at clarepringle04@gmail.com

CRICKET

'This week is the last round of the Superstar Cricket Inter-school Competition. Well done to all of the PBS students involved. You did a great job representing our school and our CREST values.

A big thank you to the parents who stepped up to manage or help out with the teams: Naomi Yeoman, Jacinta Maligieri and Rosalie Harvey.

ENERGISING YOUNG MINDS COMPETITION

Help our school win \$25,000, \$15,000 or \$10,000 to spend on our school's science or tech equipment.
Vote now:

- 1) Go to www.schoolgen.co.nz
- 2) Click on Competitions/vote for our school
- 3) Search for our school name

You can vote daily—the more votes the better!



ANZ OLYMPIC SCHOOLS PROGRAMME

Congratulations on all those buying and selling houses! Don't forget to mention **Paraparaumu Beach School** when taking out a home loan (or top-up over \$50,000) with ANZ. We can earn 800 points (worth approx. \$400) for the school to spend on a huge range of items at the ANZ Awards Centre. Please continue to **tell friends and family (anywhere in NZ)** who may be considering a home loan with ANZ! (This applies to existing and new ANZ customers). Simply tell the ANZ home loan specialist before drawdown that you are **supporting PBS** in the ANZ Olympic Schools Programme!
See www.anzolympicschools.co.nz or contact our 'ANZ staff-parent', Angela Morris at angela.morris@anz.com.



KAPITI MONTESSORI EDUCATION TRUST

KMET have organised a speaker (Sola Freeman) coming to Kapiti Primary on 4 April at 7pm. Sola will be speaking about the Montessori philosophy and how it can support young people in being confident, connected members of the community.

GET FREE BOOKS FOR OUR SCHOOL WITH KELLOGG'S AND NEW WORLD

For every New World receipt dropped into the instore collection box showing the purchase of two participating Kellogg's products, our school will be able to redeem 1 free book. Promotional Period 1 Jan-31 March 2018. Max 20 books per school. For full list of participating Kellogg products and terms and conditions visit www.kelloggs.com/freebooks



NEW WORLD

Kellogg's

Get straight A passes for wearing dark glasses

Too much sunlight can damage both the eyes themselves and the skin around them. A close-fitting, preferably wrap-around style is best.



**Embrace our Education
Enhance our Future**