

car  
ing  
sh  
aring  
pre  
paring



**Paraparaumu Beach School**

## Newsletter 2017/12

2 May 2017

### Upcoming Events

#### **TERM 2**

##### **WEEK 1**

*Tues, 2 May*

- BOT Meeting—7pm

##### **WEEK 2**

*Wed, 10 May*

- Tsunami Evacuation practice 11am

*Fri, 12 May*

- Whanau Fun Event  
11am (postponed from Term 1)

##### **WEEK 4**

*Mon, 22-Wed, 24 May*

- Karolina Stus Individual portrait photos (optional)

### PRINCIPAL'S MESSAGE

May Greetings everyone!

I hope everyone got to spend some quality time with family over the Easter and school term break. We had some pretty good weather the last two weeks, but with a cold start to today, it's timely to remind kids to "rug up" to keep colds and illness at bay.

On Friday, 12 May Liz Griffin, our teacher in Room 4, is departing PBS. Liz has been a wonderfully dedicated and well-respected teacher during her time with us, so I know she will greatly missed. Liz is going to pursue work outside of teaching and we wish her all the very best. I have appointed Tony Webb as the replacement teacher. Tony lives on the coast with his family and has been teaching in the Hutt Valley for the last 16 years. Tony was a police officer in the UK prior to moving to NZ and training to be a teacher. Tony has a wonderfully warm personality and is a highly regarded teacher at his current school in Trentham.

Warm regards, Jess Ward – Principal/Tumuaki

### WELCOME TO OUR NEW STUDENTS

Casey—Rm 22, Eden—Rm 22, Madison—Rm 22, Braxton—Rm 22, Emillie—Rm 22 and Mason—Rm 11



### REFURBISHING CLASSROOMS—STAGE ONE: ROOMS 5-8

Six companies are currently collating tenders for this project. It is great for our Board to have such a good range to select from.

**Embrace our Education  
Enhance our Future**

## **TSUNAMI EVACUATION PRACTICE**

Last term we were unable to complete our Tsunami Evacuation practice, so we hope to complete this (weather permitting) on **Wednesday next week at 11am**. This involves walking our whole school to Mazengarb Reserve. This practice will be discussed with children, leading up to the day, so that they know it is only a drill.

We aim to walk calmly but at a good pace down Guilford Drive, left into Realm and through the back gates of the reserve and onto the Touch Rugby fields. Once at the reserve, classes will assemble for roll count, before returning back to school for lunch. This is a large undertaking but one we need to practise. Parental permission for this practice will be taken as a given, unless you inform us otherwise (in writing).



## **KIDS QUOTE**

At the end of last term Mr Trask took it upon himself to ring the morning tea bell. This job is assigned to a very reliable Year 8 student, who does an excellent job. This student caught Mr Trask with his finger on the bell and told him off.

**Student - " Mr Trask, that bell was 30 seconds too early and 1 second too long!"**

**Mr Trask - "You're a tough boss."**

Don't do it again Mr T!

## **PRIDE CHALLENGE—WORTHY MENTION**



Yesterday when I was on duty Jamie Brown (Year 6) told me of the Citizenship Pride Challenge he is currently doing for homework. This involves visiting senior citizens in a local resthome for 6 visits.

Jamie made contact with Kenakena Resthome and has been paired up with Norma and Ron, who are both in their 90s. Jamie met them for the first time last term and has had two visits with them so far. They have been having conversations about their childhood experiences in comparison to school today. Jamie says he will probably keep seeing them even after the 6 visits are up because he really enjoys their sense of humour. Jamie also told me that he had a really 'nice reaction' from them on his second visit, when they both said "Yay, Jamie's here!"

You are a great PBS kid Jamie; keep up the amazing contribution you are making!

Ms Ward

## ICE SKATING AT PBS

Yes! You read that right. We have an ice skating rink coming to our school. Check out the advertisement below for details.

This is a Te Motu Camp fun(d)raiser!



# ICE SKATE TOUR

## Paraparaumu Beach School School Fun(d)raiser

On Tuesday, 30/Wednesday, 31 May from 3-7pm  
And  
Thursday, 1 June  
3-6pm  
All welcome!



**\$7 kids (under16)\***  
**\$13 adults**  
**\$35 family (2 kids and 2 adults)**

*\*Prices include ice skates, helmets and at least half an hour ice skating (longer when not busy)  
MoreFM Bubble machines!*

## STUDENT ACHIEVEMENT

Congratulations to Gemma Lew and Olivia Duncan who attended the Alana Haines Australasian Ballet awards at the St James Theatre at the end of last term. These two talent PBS students danced through the weekend with 560 other ballet dancers from around the world.

What a wonderful opportunity to be selected for girls!



car ing

shar ing

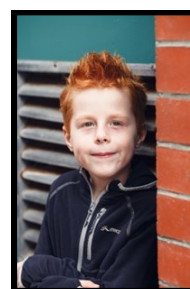
prepar ing

Embrace our Education ~ Enhance our Future

## FRIIS PHOTOS AND KAROLINA STUS PHOTOS

This week students in Years 3 – 8 will receive order forms for the class and individual photos that Friis Photography took in Term 1. Friis will be back in August to take the class photos for Years 0-2 and our team/group photos.

In four weeks time we have the added bonus of offering Karolina Stus' photography to you, for those families who want to have individual portraits of their children taken in her more personal, creative style. Karolina will come into school to take the photos during the school day. (See photos from last year below). More information about how to book for this will be in next week's newsletter. Making a booking with Karolina doesn't tie you into a purchase. You still have the choice to purchase once you have viewed the photos.



## NETBALL

The Netball season starts this weekend for players in Years 4 to Year 8. The season will start on Wednesday 10th May for Year 3 players. The season still continues for Year 1 and Year 2 children, resuming Wednesday 3rd May.



School netball tops will be handed out to players over this coming week. They are to be returned at the end of the season.

All players should be aware of what team they are in. If not, team lists are on Room 13s window

Coaches will inform you of the time your child will be playing. If you would like to check before this notification, here is the link to the draw <http://www.netballkapiti.org.nz/draws-results/draws-1>

The draw is usually up by Thursday at the latest.

Vicki Wilson

## HOCKEY

The hockey season starts for:

- Year 1/2s on Sunday, 14 May at 8.45am
- Year 3/4s on Sunday, 14 May at 10am
- Year 5/6s on Wednesday, 10 May
- Year 7/8s on Tuesday, 9 May

All players should be aware of what team they are in. If not, team lists are on Room 13s window.

For those players in Years 3-8, your coach will contact you with more details. Hockey practice for Years 3-8 players is on a Friday starting at 3.30pm at the hockey turf in Scaife Drive.

The draw will be on the Kapiti Junior Hockey website. The link to the draw is:

Year 5/6—<http://www.kapitihockey.org.nz/Year 5-6Draw>

Year 7/8—<http://www.kapitihockey.org.nz/year 7-8>

Vicki Wilson



Order your NEW 2017/2018 Entertainment Book or Entertainment Digital Membership now. You'll receive hundreds of valuable offers for everything you love to do, and help our fundraising at the same time.

To order your Entertainment Membership visit [www.entbook.co.nz/1051t05](http://www.entbook.co.nz/1051t05)

See more info at the end of this newsletter!

car ing      shar ing      pr e par ing

Embrace our Education ~ Enhance our Future



## COMMUNITY NOTICES

Please note—community notices are accepted on a “publication if space allows” basis (thus no guarantee of publication can be given) three times per term (start/middle/end); **a small contribution of \$10 to the school for short “business” notices is appreciated before publication**; and finally and importantly, the publishing in the school newsletter of any community notice does not imply school sanctioning of, support for, or knowledge of the event or activity described

**Goalkeeping Clinic:** Team Wellington Goalkeeper Scott Basalaj would like to invite any current or aspiring goalkeepers to the programme at Weka Park starting on Tuesday, 2 May from 3.30pm for Under 12s and 4.30pm for 13 and over—cost \$199. To register email [scottbasalaj@yahoo.com](mailto:scottbasalaj@yahoo.com) with child’s full name, age, parent’s name, contact number, email and other (medical conditions etc).

**Kapiti Squash Club:** Open day Sunday, 7 May from 10am-3.30pm at 28 Anthony Grove, Paraparaumu Beach. Everyone welcome. See [www.kapitisquash.co.nz](http://www.kapitisquash.co.nz) or email [info@kapitisquash.co.nz](mailto:info@kapitisquash.co.nz).

**Marsden School, Whitby—Open Day and Scholarships:** Sunday, 7 May from 11am-1pm at 2 Starboard Lane, Whitby. Year 9 scholarships for entry in 2018 are now open too and close 18 May. Find out more info or apply on line at [www.marsdenwhitby.school.nz](http://www.marsdenwhitby.school.nz)

**Paekakariki School Fair:** Sunday, 7 May from 10am-2pm. Email [paekakarikischoolpta@gmail.com](mailto:paekakarikischoolpta@gmail.com) for more info.

**Junior Basketball Coaching Programme:** Restarts Sunday, 7 May through to Sunday, 2 July at KCDC Sportshall, Paraparaumu College. See notice on notice board for more info.

**Hoop Club, Otaki:** Restarts Sunday, 7 May through to Sunday, 2 July at Otaki College Gym, Mill Road, Otaki. See notice on notice board for more info.

**Wellington Marathon:** 18 June 2017 including a Kids Magic Mile. For those running the full/half marathon, join Team Heart Racer and help raise vital funds for the Heart Foundation. See [everydayhero.co.nz/event/wellington-marathon-2017](http://everydayhero.co.nz/event/wellington-marathon-2017).

**Coaching Clinic for Coaches:** Wednesday, 3 May at Kapiti College Gym, Margaret Road, Raumati Beach from 5-7pm. Please email [ar.rimutaka@paradise.net.nz](mailto:ar.rimutaka@paradise.net.nz) to register.

**In the Footsteps of the Marines:** Sunday, 28 May 2017 run or walk a Marines route march of 13.2km. It is manageable for anyone 12 years and over with a reasonable level of fitness. Meet at Whareroa Farm, MacKays Crossing, north of Paekakariki. Social walkers and slow joggers start at 9.00 am, Race Walkers at 9.30 and Runners at 10 am. Spot prizes and hot soup with a bun to follow. Entry fee is \$25. Participants can register at: [www.enteronline.co.nz](http://www.enteronline.co.nz) - just scroll to In the Footsteps of the Marines. Late entries on the day \$30.

**Hookway Tutoring:** Primary school students are offered tuition in language and maths. A new Home Study programme in maths from \$8/week is offered to Yr 7/8 students covering all aspects of number and equations. College students can receive tuition in maths and science with regular or one-off lessons as required. For further details, see [www.hookwaytutoring.co.nz](http://www.hookwaytutoring.co.nz) or contact Brian Hookway on 902 2453 or 021 179 0223 or email [hookwaytutoring@gmail.com](mailto:hookwaytutoring@gmail.com)

## COMMUNITY NOTICES (contd)

**Kapiti Marine Reserve Family Fun Day:** It's the 25th anniversary of Kapiti Marine Reserve on 7 May and to celebrate this important milestone, the Guardians of Kapiti Marine Reserve are hosting a free "Under the Sea" themed event at the Kapiti Boating Club on Saturday, 6 May from 1pm. See notice board at the office for more details.

**Dreams Drama School:** Teen Drama proudly presents "Teendaze" on 4 & 5 May at 7pm; 6 May at 2pm and 7 May at 4pm at Paraparaumu College auditorium. Tickets \$15. email: [dreamsdrama@clear.net.nz](mailto:dreamsdrama@clear.net.nz).

**Paraparaumu School Fire:** The Paraparaumu School Board of Trustees recognise that without the support of the wider community after the devastating fire in 2014 we would not have such a wonderful school today. In recognition of the support we received, we would like to extend an open invitation to visit our fabulous school which has completed its first term in the new classrooms. Please come and visit us on Sunday, 14 May 2017 between 2 and 4 pm to check out the new spaces and see what has risen from the ashes thanks to your support which made us stronger and better. Paraparaumu School Board of Trustees



**Kapiti Learn to Swim**

*Give your child every chance in the water*

Safe Environment  
Expert Instructors  
Award Winning School

Infants, School Age and Adults Lessons Available  
New Zealand's First Non Chlorinated Swim School

*Come in and visit us and watch a session in progress.*

P: 04 297 2465 Ratanui Pool, 24 Ratanui Road, Paraparaumu  
E: [klts@paradise.net.nz](mailto:klts@paradise.net.nz) W: [www.swimminglessons.co.nz](http://www.swimminglessons.co.nz)

car ing      shar ing      pr epar ing

Embrace our Education ~ Enhance our Future

## ENTERTAINMENT BOOKS

Paraparaumu Beach School PTA is raising funds. Here's how you can help ...

Help us raise funds for our school by buying an entertainment Membership from us. You'll receive hundreds of valuable offers for everything you love to do, and help our fundraising at the same time!



Use just a few of these offers and you'll more than cover the cost of your Membership!







# **KCHC Junior Hockey – Season Kick-off**

## **Mini's Funsticks &**

## **Fun-day Mixed 6-Aside Quick-fire**

## **Tournament 2017**

*Sunday 7<sup>th</sup> May 2017 at the Kapiti Sport Turf*

**9:30 - 12:15 pm**

We are doing it again in 2017 – kicking off the Kapiti Junior Hockey season with:

- **A Fun-day mixed 6-aside tournament for years 3-8 children, from 09:30 – 12:15 pm** just turn up between 9-9.30 am and we will create teams for a quick-fire (15 minute games)

We will run separate games for Year 3-4 teams

**Cost:** Only \$5 per player – which we will collect on the day

Don't have a stick. Don't worry we will have some gear for you to use. **But you must bring a mouth guard and shin pads- they are compulsory.**

**Rules for the day:**

1. Games will 6 aside mixed, quick-fire 15 minutes one way played on a half field. – this means you will get heaps of games through the morning
2. There are no goalies
3. Free hits only – no penalty corners
4. Pushing only – no hitting
5. Mouth guards and shin pads compulsory on the day.
6. Teams should try to wear a similar coloured top - but bibs will be available to avoid confusion.
7. First games starting at 9.30 am sharp

### **JUST HOCKEY POP UP STORE**

**Just Hockey** will have a pop up store in the pavilion should you need some hockey gear come in and have look. |

If you have any questions please call me – Mike Ward – KCHC Junior Convenor (027) 311 0183 or [mikeward.sew@gmail.com](mailto:mikeward.sew@gmail.com)