

car
ing
sh
aring
pre
paring



Paraparaumu Beach School

Newsletter 2017/15

23 May 2017

Upcoming Events

WEEK 4

Mon, 22-Wed, 24 May

- Karolina Stus individual portrait photos (optional)

Wed, 24 May

- Mid-Week Munchies
- New Entrants' Parent Meeting 7pm

Fri, 26 May

- Life Education Programme starts for Te Moana Syndicate

WEEK 5

Tues, 30 May—Thurs, 1 June

- Ice Skating fundraiser

WEEK 6

Mon, 5 June

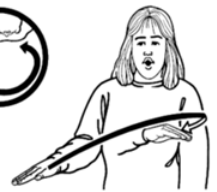
- Queen's birthday—**SCHOOL CLOSED**

PRINCIPAL'S MESSAGE

Hello Everyone/Kia Ora Koutou



Last week was Sign Language Week and it was obvious that many of our classes spent some time learning about this as one of New Zealand's three official languages. I saw many



students out in the playground practising some of the signs they had learned in class.

Sad news for us, but we have a few upcoming staff changes. Firstly, a big congratulations to Jeanine Wilson who has won a permanent teaching position at Tawhai School. Jeanine was looking for a permanent position and a job closer to where she lives, so this is great news for her. Jeanine will be departing PBS later this term, and I know the students and staff will be sad to see her go. Also departing PBS at the end of Term 2 is Sarah Beresford from our junior team. Sarah is looking for a change in career, which is another sad loss for us. I know Sarah did amazing things when she worked at NZCER (New Zealand Council for Educational Research), so I'm sure she will go on to accomplish great things, as she has here. The demands of teaching have changed so much in the last 7 years (since the introduction of National Standards) and it certainly has had an impact on work/life balance. Hopefully, being election year all parties can look to address such issues in education and offer some sustainable solutions.

On a positive note, this term I am spending time in every classroom, helping, getting involved in what the students are learning and spending time getting to just touch base with kids. These classroom visits are such a joy; seeing kids actively involved in diverse learning tasks and watching their enthusiasm just makes me want to be a kid again. Thank you PBS teachers for offering engaging educational experiences, in such warm and welcoming classroom environments!

Kind regards, Jess Ward – Principal/Tumuaki



**Embrace our Education
Enhance our Future**

SCHOOL ENROLMENT SCHEME—TERM 3 & 4 NEW ENTRANTS

We are now at the planning stage for our intake of 2017 Terms 3 & 4 New Entrant five-year-olds.

If parents have fully completed and returned the recent “Information Update” form, we should have all relevant information regarding future new entrants from current school families. Additionally, if you have friends or neighbours who don’t currently have a child at PBS, but may be hoping to enrol a new entrant child here in Terms 3 or 4, please ask them to contact our school office. Thank you.

n.b. The “out-of-zone” applications process for Term 3 & 4 New Entrants was advertised last week. Contact Marie in the school office if you have any queries.

DOGS IN SCHOOL GROUNDS



We have had an unacceptable spate of dog excrement around the school grounds over the last 2-3 weeks, which is a very unpleasant hazard for kids and nasty mess for staff to clean up. Our school is a ‘dog-free’ zone, but we are aware that people walk their dogs in the grounds after school hours from time to time. Perhaps there have been dogs on the loose recently too. We ask everyone to keep an eye out for dog owners who are not being responsible and perhaps remind them that the grounds are dog-free. Thanks

KIDS QUOTE

A teacher shared this email correspondence with me recently and the student has allowed me to share it in this newsletter. I love the intelligence and thoughtfulness shown by this senior boy.

Hi Mrs Snowsill

I need to talk to you about Homework as you know I have had family over that I don't get to see all the time my uncle tony and aunt lona and special time that I don't get all the time because they live in Abu Dhabi and I couldn't get to do my task for the homework assignment and I was wondering if I could get a extension on the task so I could do it over the weekend I would be so pleased if you could let me to have a extension. Liam

Hi Mrs Snowsill,

I have just reread my email and see I have made a few grammar mistakes. So I would like to start again.

My aunty and uncle from Abu Dhabi have been visiting over the past few weeks and this has distracted me from completing the obstacle course assignment. I would be most grateful if you would allow me an extension. I feel I would be able to have this completed by mid next week. I thank you for your consideration however if you are not so inclined to grant me an extension could you please inform me of my consequence.

Many thanks Liam.

Hi Liam, The extension is fine. Just let me know when it's done and I will mark it. Mrs S

THANK YOU SO MUCH BEST TEACHER EVER!



HAND, FOOT AND MOUTH

We have recently had a few cases of young students with Hand, Foot and Mouth. This is not related to 'foot and mouth' disease in animals. The human ailment can be caught by anyone but is most common in children under 10. A mild fever is usually the first sign, generally followed by painful sores in the mouth and a rash with blisters on their hands and feet. Symptoms usually last between 3-7 days and can sometimes be mistaken as chickenpox.

The NZ Ministry of Health recommends children are treated with paracetamol and plenty of fluids. If your child develops this ailment please keep them at home until the blisters have dried. Thank you

MID-WEEK MORNING TEA MUNCHIES

The cost is \$1 or \$2 per item. This week and next week this will be a fundraiser for Ngaru Syndicate's trip to Palm Grove at the end of the year.

JUICEES

The PTA will continue to sell Juicees every Friday at lunchtime for the rest of this term.

They will be available outside Room 29 and will cost \$1.00 each.



ICE SKATE TOUR

Paraparaumu Beach School Te Motu Camp School Fun(d)raiser

On Tuesday, 30/Wednesday, 31 May from 3-7pm
And
Thursday, 1 June
3-6pm
All welcome!

\$7 kids (under16)*
\$13 adults
\$35 family (2 kids and 2 adults)



**Prices include ice skates, helmets and at least half an hour ice skating (longer when not busy)
MoreFM Bubble machines!*

car ing

shar ing

prepar ing

Embrace our Education ~ Enhance our Future

NETBALL SPONSORSHIP REQUEST

Eilidh Hamilton, Oceania Tiata and Annabel Logan have been selected to be in the Kapiti Representative Netball team. They go to tournaments and play for the district, but can't do this without financial assistance, so this is where we need your help! The girls are going to compete in a 5km run for sponsorship and would love you to contribute. You can sponsor an amount per km or just a lump sum amount.



Please contact Eilidh Hamilton in Rm 15 if you can help, or simply send an email to jward@pbs.school.nz stating your name and the sponsorship amount.

Thank you.

NEW ENTRANT PARENT INFORMATION PRESENTATION REMINDER—TATAHI SYNDICATE

As advertised in previous newsletters, a New Entrant Information Presentation will be held for all parents of new children this Wednesday, 24 May from 7-8pm.

In Tatahi Syndicate, we believe that successful partnerships between home and school are established when both parties have a shared expectation and knowledge of their child's learning. We would love to see you there.



New Entrant Information

ADULT HELPERS REQUIRED



Te Moana syndicate (Yr 5/6) is in need of some adult helpers (parents/grandparents) to work with small groups of students in improving their maths skills.

If you are able to give us some of your time, please contact Vanessa Brewer at vbrewer@pbs.school.nz.

PBS SPORTS TEAM HOODIES

A separate order form will be going out for these today. Any questions please email lynzbatty@hotmail.com.



RECENT STUDENT ACHIEVEMENTS

Surf Life Saving: Congratulations to Bella Brewer who won her age group in the Paekakariki Surf Life Saving Club Champs and her sister Logan who came 2nd in her age group! We are super proud of you two; well done.



Black Fern 7's: Congratulations to former student Tayla Reti who has been selected to play for New Zealand's Black Ferns 7's. Tayla flew out to Canada on the weekend for the first leg of the International Women's Rugby Series and will go on to France for the following leg. During Tayla's time at PBS and Paraparaumu College she was a formidable Touch Rugby player, so we know she will make a success of this opportunity. Best wishes Tayla!

RACE NIGHT

Do you like the races? Do you want a fun night? Then you need to buy a ticket to the PTA's main fundraising event for 2017- *Race Night*. Tickets cost \$10.00. **There are only 30 tickets left so be in quick!**

Food will be provided on the night. Wine, beer, low alcohol beer and non-alcoholic drinks will be available to purchase.

Orders need to be in by May 31. Tickets can be purchased by e-mailing Sharleen at the following address: vandsmacinnes@hotmail.com or contact number: 021 255 8255.

Reminder this event is for adults only. EFTPOS will be available at the bar, but bring along your cash for betting and raffles.

FROM THE PTA

This year's PBS PTA members are:

Josh Beasley	Nicki Bradley	Nicky Holden
Vanessa Kellogg	Sharleen MacInnes	Connie Murphy
Chris Naulder	Samara Shaw	Jing Zhou
Staff Representatives:	Sarah Chambers	Sandy Saunders



We are a very welcoming bunch so come along and share your ideas and help in any way that you can. Our next meeting will be held on Thursday, 1 June at 7:30pm in the school staffroom.

We would like to acknowledge two members who recently stepped down from their PTA roles:

- Cheryl Morrin was our amazing Treasurer for many years. This is a huge role and a particularly challenging one during Gala years. We are very grateful for her tireless efforts and we will miss her wicked sense of humour. Thank you Cheryl!
- Dallas Nicholas was our very organised Secretary. Dallas brought a wealth of knowledge and experience to this role. She is a great networker and an awesome event planner. Thank you so much Dallas!



entertainment™

Order your NEW 2017/2018 Entertainment Book or Entertainment Digital Membership now. See more info at the end of this newsletter!

car ing

shar ing

pre par ing

Embrace our Education ~ Enhance our Future

ENTERTAINMENT BOOKS

Paraparaumu Beach School PTA is raising funds. Here's how you can help ...

Help us raise funds for our school by buying an entertainment Membership from us. You'll receive hundreds of valuable offers for everything you love to do, and help our fundraising at the same time!



Use just a few of these offers and you'll more than cover the cost of your Membership!

